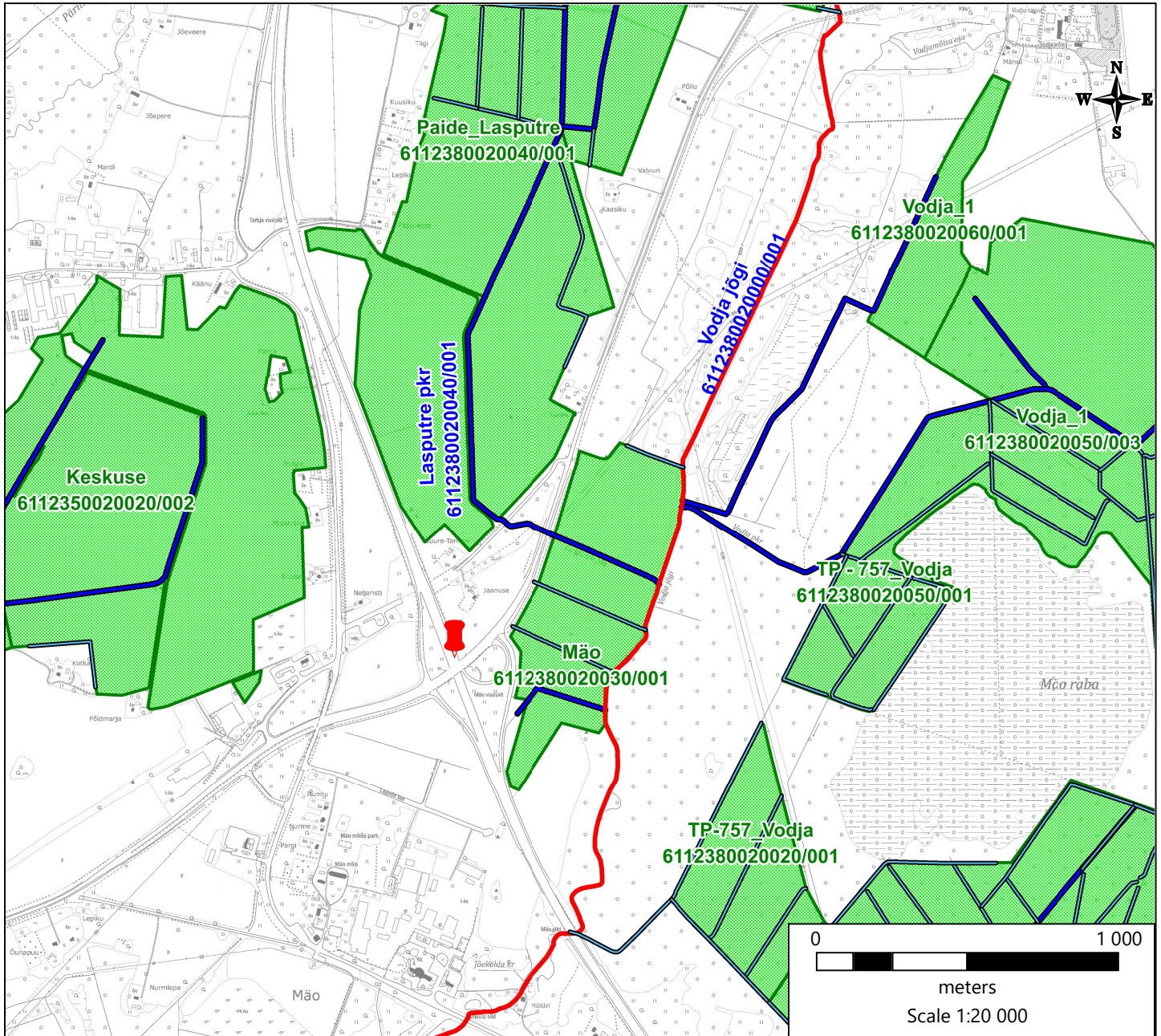





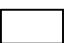


Asukoha skeem



Leppemärgid:

-  riigi poolt korras hoitav ühiseesvool
-  maaparandussüsteemi eesvool
-  kuivenduskraav
-  maaparandussüsteemi maa-ala
-  Kavandatud projekti asukoht
-  kinnisasja ringpiir

Aluskaart: Maa- ja Ruumiamet

Koostas: Urmas Karu
peaspetsialist-koordinaator
maaparanduse osakond
Maa- ja Ruumiamet
03.02.2025